

BREAD & WINE

News from
HOLY COMMUNION LUTHERAN CHURCH

APRIL 2012

Holy Communion Lutheran Church
P. O. Box 55, Fallston, MD 21047-0055
443-299-6134
holycommunionlc@comcast.net
web site: holycommunionfallston.org
Pastor John K. Burk
443-653-2462-cell

HOLY WEEK SCHEDULE

Sunday April 1 - Palm Sunday



8:30am - the choir will present a cantata at this service. Please join us to hear the drama of salvation enacted in word and song.

10:15am - the group "Joyful Noise" a contemporary praise band from the University of Maryland, College Park will be our guests. They will provide a concert touching on Holy Week themes during the place of the sermon.



11:30am - Brunch and Easter Egg Hunt - The congregation is going to have an Easter Egg Hunt for all the children of the parish, but the congregation is also invited. Please sign up in the Narthex.

6pm - Soup & Bread Meal at St. Mark (Please bring a bag of salad mix or a bottle of salad dressing)



7pm - Stations of the Cross in the church of St. Mark. Our choir and the other churches of the Fallston council of churches will participate. It is a wonderful service, very inspiring.

Thursday, April 5 - Maundy Thursday

6:30pm - Agape Meal - Please sign up to bring dried fruit, bread, butter, or grape juice to share. A vegetable barley soup will be prepared for all of us to enjoy.

7:30pm Service, "Last Supper Tableau" and



stripping of the altar. We will have our traditional service with the addition of a tableau which recreates the Leonardo DeVici painting the "Last

Supper" as a living tableau. Come and meet James, son of Alphaeus, Doubting Thomas, Peter and Judas and take your own place at the communion table to join all the disciples of time and space as we re-live the night of Jesus' betrayal.

Good Friday - April 6

7:30pm - Tenebrae Service at Holy communion



with the Fallston Methodists and Presbyterians. In keeping with our commitment to forge stronger links of unity with our fellow Christians in

Fallston, our Good Friday service will feature the choirs and Pastors of three of our partner church (St. Mark has their own service on this evening as it is a day of sacred obligation for Roman Catholics).

Sunday, April 8 - Easter Sunday

8:30am our Traditional Service



We are planning a brass quartet and festive music for Easter.

10:15am our contemporary Praise of the Risen Lord, conqueror over sin and death.



BISHOP WOLFGANG'S EASTER MESSAGE

Early on the first day of the week, while it was still dark, Mary Magdalene went to the tomb and saw that the stone had been removed from the entrance. So she came running to Simon Peter and the other disciple, the one Jesus loved, and said, "They have taken the Lord out of the tomb, and we don't know where they have put him!" (John 20 : 1-2, NIV).

One thing you can say about God: God sure is consistent.

First, he decides to have his only begotten son enter the human race in a filthy old stable with a feed box for a crib ... what a laugh!

Then, Jesus runs around the Galilean countryside and seems to like nothing more than to consort with tax collectors and thieves and prostitutes and immigrants, with outcasts and with sinners ... ridiculous!

Finally, Jesus gets himself killed, nailed naked to a rough cross, executed in the most gruesome way known to humankind ... downright scandalous!

And now, in the moment of his greatest glory, at the moment of resurrection and new life, he chooses a woman to be the first witness of this resurrection!

A woman! God is nothing if not consistent, and at every turn, he surprises us with the unexpected.

In Jesus' day, women were the property of their fathers and husbands. They had no rights, could not own anything, could not testify in a court of law by themselves. And yet it is Mary Magdalene, a woman of allegedly ill repute, who is the first at the empty tomb and so becomes the primary witness to the greatest and most important event in all of human history.

It is that event that has shaped us, has shaped the world, ever since. In Jesus' resurrection, God has said a loud and final NO to death and the grave. God has rolled away not just the stone that sealed the tomb but the huge rock that blocks our lives.

God has rolled away the large stone that keeps us from seeing and from sharing God.

God has rolled away the boulder that stands between us and God.

You know the expression, don't you, "that's a huge weight off my mind?" When you worry about something, when some situation really weighs you down, and then, unexpectedly perhaps, the situation gets resolved, and you say: that's a huge weight off my mind.

Well, friends, I am here today to tell you that in rolling away that rock in front of that tomb all these many Easters ago, God has taken a huge weight off your soul. With God, all things are possible, and whatever that rock is in your life that weighs you down, whatever sin is eating at you, whatever addiction has gotten hold of you, whatever broken relationship or illness has you captive, whatever the burden is that you are carrying,

Let God lift that burden

Let God roll that stone away

Let God do the impossible in your life.

The body is gone! Jesus lives!

Alleluia and Amen.

WOMEN'S RENEWAL COMING IN APRIL

HOLY COMMUNION LUTHERAN CHURCH

4th ANNUAL WOMEN OF FAITH GATHERING

A WOMEN'S DAY OF RENEWAL!

OUR THEME

"CLEANING SOUL-UTION FOR THE COBWEBS IN OUR SPIRIT"



Ideas for the perfect cleaning SOUL-ution against the sins that create stains on our spirit, and muddies our relationship with God.

WHERE: HOLY COMMUNION LUTHERAN CHURCH

WHEN: SATURDAY, APRIL 21, 2012

TIME: 8:30am - 3:00pm

SPEAKER: CHASITY WIENER,
HCLC PARISH ASSISTANT

REGISTRATION: February 26 - April 6

COST: \$20 PER PERSON
(includes continental breakfast & lunch)

INVITE YOUR FRIENDS!

If you need a ride to church please contact Sherri Glock (443-604-8887)

KOINONIA EVENTS



04/27/12 - Dinner, *Mountain Branch*, 6:30pm

05/12/12 - NYC Bus Trip, NYC, Time later

06/23/12 - *Boordy Vineyard*, Time later announced

07/20/12 - Dinner, *Silver Spring Mining Co*, 6:30pm

08/16/12 - Dinner, *Twisted Harp*, 6:30pm

BIBLE STUDY



BIBLE STUDY continues on
Tuesdays, 7pm

We will begin studying
1st and 2nd Peter on April 10.

THANK YOU NOTES

THANK YOU to **Tom Sullens** for the cross holder on the lecture.

THANK YOU to a member, who wishes to remain anonymous, that made the beautiful banner for our Lenten Season.

THANK YOU to all those who set up, cleaned up and ate at the Shrove Tuesday Pancake Supper.

THANK YOU to those who attended the Lenten Soup Supper and Services.

25 REASONS TO SEEK A HEALING MINISTER



To express thanks, To beat fear
To support flagging faith
To seek relationship renewal
To restore a broken bond
To cope with a "difficult" personality
To reduce anxiety
To grieve well
To request forgiveness
To restore joy

To seek peace with your neighbor
To support another's faith journey
To feel loved

To deal with divorce
To deal with a "lost" cause
To handle upcoming surgery
To sort out emotions

To eliminate chronic pain, To defeat chemical dependency

To request a change in heart
To remind us we are not the solution to problems

To restore faithfulness
To feel 'found' rather than lost
To keep emotions in check
To seek God

How many reasons can you you imagine?

FELLOWSHIP SOCIALS



Fellowship socials are scheduled for the first Sunday of every month, from October thru May.

In May we will be serving a more traditional breakfast also.

In March, and April we will be having a continental type breakfast.

Please join us between services for fellowship. Any one who would be willing to bring a baked goods, please see/call or email Ellen Priebe (spring313@verizon.net) or 410-679-8655

HELPING THE FALLSTON ANIMAL RESCUE

Thank you to the congregation for your support of the **Fallston Animal Rescue Movement**. We will be collecting again on **Sunday, June 3.**

Please save your old sheets, towels, small blankets, and rugs. They always need money for vet bills and can use cat food (wet and dry), no dog food.



Every three months, on the first Sunday of the month in **March, June, September and December** there will be a collection for the shelter. So start putting your old sheets, blankets and towels in a bag or box and bring them to church on the **first Sunday of March, June, September & December**

2012 - Collection Sunday March 4, June 3, September 2 and December 2.

Thank you in advance for all the help you give to our sheltered animals friends.

Fallston Animal Rescue Shelter





BIRTHDAYS in APRIL



04-01 - Daniel Gonca	04-14 - Jackie Gray
04-02 - Charles Lynch, III	04-14 - Judy Meyer
04-02 - Zach Miller	04-16 - Patti McClean
04-03 - Anna Louise Scandiffio	04-16 - Sheri Hoffmann
04-05 - Katie Plantholt	04-17 - Daniel Griffin
04-06 - Margaret Frieman	04-17 - Michael Wolf
04-07 - Bill Kellermann	04-19 - Kierston Giordano
04-07 - Susan O'Connor	04-20 - Joyce Ey
04-07 - Noah Thanner	04-20 - Natalie Adams
04-08 - Sandy Moll	04-22 - Rob McCombs
04-11 - Rooney Peterson	04-23 - Chasity Wiener*
04-11 - Kyle Giordano	04-29 - Weston Shook
04-11 - Dylan Snyder	04-30 - Amber Dix

HOME SAFETY FOR OLDER ADULTS

Falls are a leading cause of injury and death in adults over the age of 65. Injuries directly impact the independence, mobility and quality of life in the elderly. Hip fractures result in hospitalization with only one half of the injured older adults returning home to live independently. Diminished mental abilities, impaired reflexes, sight and mobility contribute to the number of falls and injuries in the elderly's homes. Simple changes in the home and the manner in which tasks are accomplished can reduce the incident of falls by 50%. An older adult may neglect or refuse changes due to financial limitations, inability to recognize the need for help, unsure where to get help, or failure to admit advancing age. The following lists are safety considerations for every home:

- Smoke detectors and Carbon dioxide detectors
- Eliminate or soften sharp edges
- Grab bars in bathtub and next to toilet
- Raised toilet seat and shower stool
- Lights! 100 watt for reading/60 watt elsewhere.
Use lights in hallways
- Remove tripping hazards
No throw rugs, slippery floor surfaces, furniture, clutter
- Use non-skid wax and cleaners
Use extra caution with furniture polish
- Stairs should always be kept clear
Have sturdy railing
- In the kitchen use two handled pots
Avoid wearing loose clothing with long sleeves
- Keep items you need low and easy to reach
Avoid stepstools

Take the time to check your home today for safety concerns. Ask a family member or friend help you modify your environment for optimum safety. For a comprehensive checklist with ideas for improvement check out www.cdc.gov/injury or www.eldercare.com.

Blessings, Barb Huber RN, PHN

LOVIN' LIFE SENIORS

Our goal is to "Reach out and share Christ's love" through service projects in the community while offering friendship and support to each other through social events. **Please join us! Invite your friends!** Our 2012 schedule and sign up sheets for upcoming events are posted on the senior's bulletin board in the hallway. **Please read the Sunday bulletins and Bread and Wine for any changes to the schedule below.**

WATCH FOR DETAILS CONCERNING THE FOLLOWING EVENTS

April 28 - Saturday

Serve Fest

May 14 - Monday

Fort McHenry

June 14 - Thursday

Friendly Farm

July 16 - Monday

Kitchen Kettle - Lancaster

August 14 - Tuesday

Tea By Two

September 11 - Tuesday

Crab Feast

October 18 - Thursday

News Museum - Washington, D.C.

November 8 - Thursday

Dutch Apple Theater - Lancaster - "**Second Helping-- Church Basement ladies Part II**" - Cost \$47.00--includes lunch (**Make checks payable to Pat Kellermann by Sunday, Sept. 9**) - Limited to first 25 people to sign up. Lunch at 11:45am, Show time: 1:15pm, Carpool from church at 10:30am.

December 3 - Monday

Annapolis

We are always looking for new ideas and new members. If interested contact: Nancy Campbell - 410-836-7688; Frances Gosnell - 410-893-4622; Jeanette Hastings - 410-893-7590; Pat Kellermann - 410-679-4624; Ellen Priebe - 410-679-8655

DONATE YOUR CELL PHONE or FLAG



If you have an old cell phone or flag, you can give them to Art Romain or leave them in the box in the Narthex. They are given to the Veterans.



AUGSBURG LUTHERAN HOME & VILLAGE

Augsburg Lutheran Home & Village requests the honor of your presence and prayers at a service of celebration and dedication for the newly completed Transformation Project on **Sunday, April 15**, 3pm located in the Worship & community Life Center at 6811 Campfield Road, Balto, MD 21207

ELEMENTS AND PRACTICES FOR CONGREGATIONAL STEWARDSHIP

At the most basic level, doing something, anything regarding stewardship, will improve it. Regularizing stewardship in the congregation is what really makes a difference. These elements and practices for congregational stewardship are based on a survey of approximately 60 nation-wide stewardship staff and 25 mission interpreter coordinators of the Evangelical Lutheran Church in America. This survey was taken in February 2004.

1. **Congregations** that have positioned themselves to have a vital role in the community, that have a focus beyond themselves, and that foster a healthy spirit in the congregation through strong relationships with the broader church, including synods and churchwide ministries, are poised for healthy stewardship.

2. **Leadership** is key for any congregation to be healthy. This is also true for healthy stewardship ministry.

Recurring themes regarding leadership are:

A. Pastors are the key stewardship models and leaders.

B. Pastors and lay leaders are passionate about and committed to growing in giving, talking opening about their personal giving.

C. An active stewardship team is in place that works closely with the governing board.

D. Leaders are trained and educated in stewardship.

E. There is high expectation among the leadership and within the congregation.

3. **Education** is fundamental for growing stewards. These elements were recurring:

A. Teach and preach stewardship with strong biblical principles.

B. Teach the role of money in one's life.

C. Teach personal money management.

D. Preach and converse regularly about money as an expression of faith.

E. Teach proportionate, regular, first fruits and growth giving.

F. Children and youth education curriculum include stewardship themes.

G. Teach all-of-life stewardship.

4. **Interpretation and communication** of congregational, synod and churchwide ministries are extremely important to increase accountability build trust within the congregation.

A. Conduct a year round monthly emphasis on various ministries supported by member giving.

B. Celebrate what offerings are doing by using personal stories.

C. Communicate connections, relationships and partnerships of the whole ELCA.

D. Tell the story of who we are as the ELCA, what we do in ministry together,

and how we fund those ministries in a clear, compelling way

E. Share personal stories of joy of giving.

5. **18 most effective practices** used by congregations strong in stewardship:

- A. They hold a commitment that stewardship is important. Their vision planning includes stewardship. They are clear about their purpose and mission.
- B. They give away a growing percentage of congregational income for ministries of the whole church.
- C. They practice first fruits and proportionate giving for mission support (benevolence) for the whole church.
- D. They build relationships with their members through personal contacts.
- E. They provide multiple opportunities for giving and serving.
- F. They foster spirit-filled giving and prayer development, emphasizing the connection between faith and money.
- G. They identify, explore, and nurture spiritual gifts of members, helping them to fulfill their passions.
- H. They develop an "asset-based" climate, using members' assets rather than meeting needs.
- I. They develop year round stewardship programs.
- J. They ask boldly.
- K. They thank profusely and often.
- L. They engage in annual every member response programs for financial commitments, estimates of giving or pledges.
- M. They provide programs for regular (undesignated) and over-and-above (designated) giving.
- N. They use a program budget in addition to a line item budget.
- O. They separate stewardship programs from budget preparation.
- P. They provide quarterly reports on member giving to the membership.
- Q. They establish mission endowment policies.
- R. They model first-fruits giving by sharing a percentage of their corporate income for ministry beyond the congregation.

ABITIBI PAPER RETRIEVER

Remember to bring in recycling



What was recycled in **2011** and how much we were paid for recycling paper.

Month	Tons	Total
January	3.14	\$15.70
February	2.66	13.30
March	2.51	12.55
April	2.13	10.65
May	3.30	16.50
June	1.24	6.20
July	1.78	8.90
August	1.91	9.55
September	2.21	11.05
October	1.20	6.00
November	2.40	12.00
December	4.80	72.00
Total	29.28	\$194.40

DEADLINES

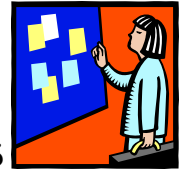


SUNDAY BULLETIN announcements should be in the office
By Tuesday mornings 9:30am

NEWSLETTER ARTICLES should be in the office by the
2nd SUNDAY OF THE MONTH.

Please note change Please note change Please note change

REGULAR SUNDAY BULLETINS FOR 2012



WEEKLY SIGN UP SHEETS FOR SUNDAY BULLETIN SPONSORS for 2012 are on the bulletin board. If you signed up, the cost is \$10. You can put your donation in the offering plate any Sunday. Put *on* your check or envelope that your donation is for a Sunday Bulletin and the week you sponsored.



BREAD & WINE NEWSLETTER SPONSORS FOR 2012

NEWSLETTER SIGN UP SHEET FOR SPONSORS for 2012 is on the bulletin board. If you signed up, the cost is \$45. You can put your donation in the offering plate any Sunday. Put *on* your check or envelope that your donation is for the newsletter and what month you sponsored.

CHILDREN'S BULLETIN SPONSORS FOR 2012



CHILDREN'S BULLETIN SIGN UP SHEET FOR SPONSORS for 2012 is on the bulletin board. If you signed up, the cost is \$10. You can put your donation in the offering plate any Sunday. Put *on* your check or envelope that your donation is for Children's Bulletins and what month you sponsored.



**Always check
the bulletin board
in the hall for various
events that are being held
at other churches
and surrounding businesses.
And for Thank You notes
and committee information,
bulletin sponsor and newsletter
sign up sheets
and general information
about HCLC.**

Newsletter from Holy Communion Lutheran Church



APRIL 2012

“REACHING OUT TO SHARE CHRIST’S LOVE!”

Holy Communion Lutheran Church
is a growing community
of faith that exists to provide
the Fallston Community with
a variety of opportunities
for spiritual development in:

WORSHIP

REACHING OUT

LEARNING

WITNESS

Come and be part of our Christian worship

Holy Communion Lutheran Church
P. O. Box 55
Fallston, Maryland 21047
443-299-6134
holycommunionlc@comcast.net
holycommunionfallston.org



Bread & Wine newsletters for 2012

Jan-Larry/Lynne Strausser	Jul-
Feb-Bruce/Gail Amrein	Aug-no newsletter
Mar-Bob & Susan Hood	Sep-Art/Diane Romain
Apr-	Oct-Myers Family
May-Rich/Becci Hall	Nov-
Jun-Jeff/Elaine McClean	Dec-Evelyn Schmidt

*Upcoming monthly newsletter deadlines are
due on the 2nd Sunday of the month*

Sun, Apr 08	Sun, Sep 09
Sun, May 13	Sun, Oct 14
Sun, Jun 10	Sun, Nov 11
Sun, Jul 08	Sun, Dec 9
Sun, Aug 12	Sun, Jan 13, 2013

Worship Services

8:30am – Traditional Service **10:15am** - Contemporary Service

10am – Sunday School